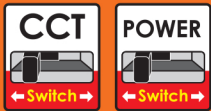


## Linear Strip Fixture CCT & Power Selectable



Easy Open Push Button



### Technical Specifications

Model No.:	ECS20-2FT347-3CCT	ECS40-4FT347-3CCT	ECS80-8FT347-3CCT
Size	2 ft	4 ft	8 ft
Watt Selectable	11W/14W/17W/20W	25W/30W/35W/40W	50W/60W/70W/80W
Voltage	120-347V		
Dimming	0-10V		
CCT Selectable	3000K/4000K/5000K		
Lumens	1430LM-2600LM	3250LM-5200LM	6500LM-10400LM
Dimensions	24" x 2.95 x 3.27"	48" x 2.95 x 3.27"	96" x 2.95 x 3.27"

### Features

- 0-10 V Dimming
- Safe for food service applications
- For single or continuous row mounting
- 5 years warranty

### Electrical

- Input voltage: 120-347VAC
- Power factor: >0.9
- THD: <20%

### Performance

- Rated lifetime L70 : 50/000 Hours
- CRI > 80
- Optional : Sensor & Emergency

### Applications

- Healthcare
- Hospitality
- Office
- Proper management
- Residential
- Retail

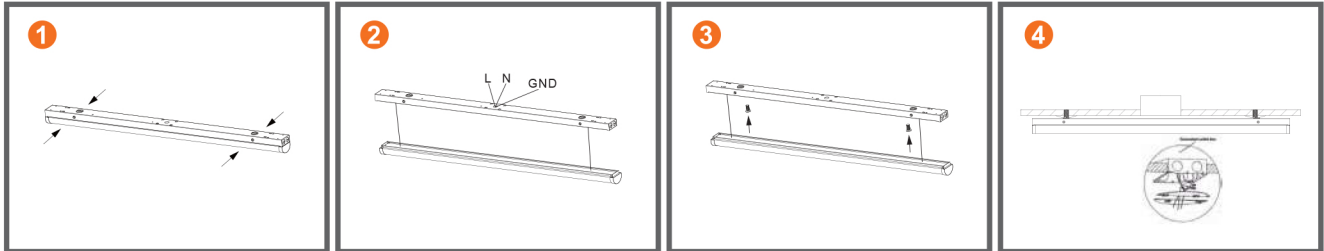
### Markets

- Healthcare & hospitals
- Schools & universities
- Sport facilities & gyms
- Retail
- Warehouse

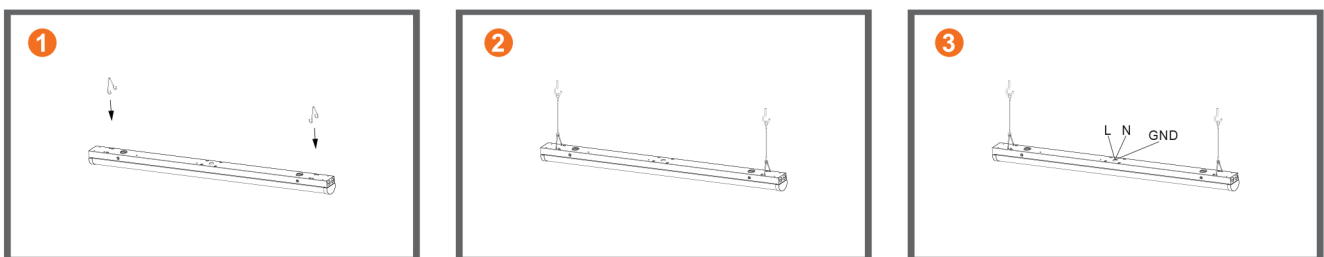


### Installation

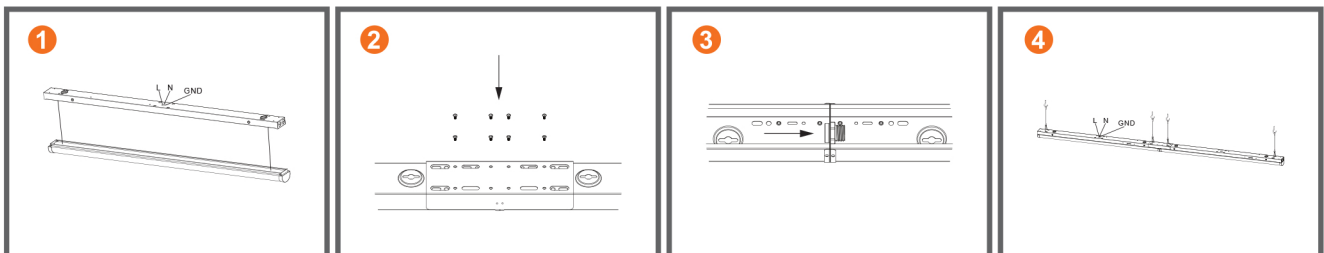
#### Surface Mount Installation



#### Chain Hang Installation

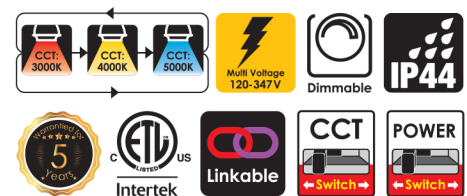


#### Linkable Installation



### Dimensions

Models	L	W	H
ECS20-2FT347-3CCT	24"	2.95"	3.27"
ECS40-4FT347-3CCT	48"	2.95"	3.27"
ECS80-8FT347-3CCT	96"	2.95"	3.27"



### Image Show

